



BANTAM TRAIL (B.T.)  
BANTAM CROSS (B.C.)  
JUNIOR CROSS (JR)  
Code Numbers preceded by ref  
"E" indicate engine serial no.  
Code Numbers without ref  
"E" indicate frame serial no.

## TRAILBIKES

PARTS CATALOGUE / CATALOGUE DE PIÈCES

1977  
BOMLANDER

# JUNIOR

## CROSS

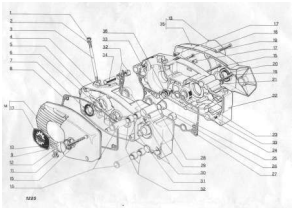
### bantam

### cross

### bantam

### trail

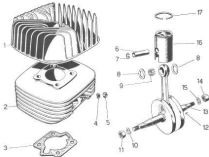




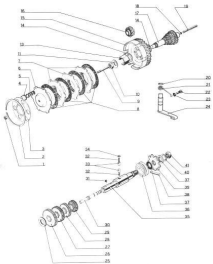
## CRANKCASE

1974

ITEM NO.	PART NO.	DESCRIPTION	QUANTITY		
			BT	BC	JC
	220 0001	Crankcase Halves Mate	1	1	1
1	220 0001	Nut	4	4	4
2	220 0002	Washer 7/4 x 14	4	4	4
3	220 0003	Stud Bolt	4	4	4
4	220 0007	Left Crankcase Half	1	1	1
5	220 0003	Cotling	1	1	1
6	220 0004	Cotling	2	2	2
7	220 0005	Ring Seal 1 1/2 x 40 x 8.5	2	2	2
8	220 0006	Gasket	1	1	1
9	220 0010	Oil Filter Plug	1	1	1
10	220 0006	Gasket 24 x 32	1	1	1
11	220 0012	Oil Drain Plug	1	1	1
12	220 0011	Gasket 12 x 17	1	1	1
13	220 0008	Name Plate	2	2	2
14	220 0007	Left Side Cover	1	1	1
15	220 0009	Screen 6 x 60	1	1	1
16	220 0013	Spacer Sleeve	4	4	4
17	220 0014	Grassmat	2	2	2
18	220 0008	Screen 6 x 26	6	6	6
19	220 0008	Screen 6 x 45	12	12	12
20	220 0015	Ring Seal 20 x 42 x 7	1	1	1
21	220 0016	Cotling	1	1	1
22	220 0017	Right Crankcase Half	1	1	1
23	220 0018	Bearing 20 x 42 x 8	1	1	1
24	220 0019	Bolt Tight 1/2 x 19 x 12	1	1	1
25	220 0020	Bushing	1	1	1
26	220 0021	Bush For Drive Shaft	1	1	1
26	220 0022	Bush For Selector Shaft	1	1	1
27	220 0023	Gasket	1	1	1
28	220 0024	Bearing 17 x 26 x 8	1	1	1
29	220 0025	Bearing 17	2	2	2
30	220 0026	Nut 6	2	2	2
31	220 0029	Gasket For Starting Shaft 18 x 24 x 2	1	1	1
31	220 0027	Gasket For Selector Shaft 20 x 26 x 4	1	1	1
32	220 0028	Anti-Vibration Bushing	10	10	10
33	220 0029	Drill Pin	4	4	4
34	220 0030	Spacer Sleeve	2	2	2
35	220 0031	Right Side Cover	1	1	1
36	220 0007	Washer 13.1 x 25 x 2.5	1	1	1

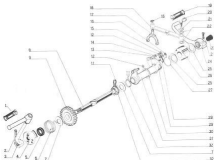


ITEM NO.	PART NO.	DESCRIPTION	QUANTITY		
			BT	BO	AL
1	200-0002	Cylinder Head	1	1	1
2	200-0003	Cylinder	1	1	1
3	200-0004	Socket	1	1	1
4	200-0005	Spring Washer 6/4 x 10	2	2	2
5	200-0006	Nut 6 x 5	2	2	2
6	200-0005	Subsidiary Pin	1	1	1
7	200-0008	Crane 12	2	2	2
8	200-0007	Shim	2	2	2
9	200-0007	Washer 2 x 11.8	21	21	21
10	200-0012	Spring Washer 10 x 17	1	1	1
11	200-0013	Nut 10 x 8.5	1	1	1
12	200-0008	Crankshaft Key	1	1	1
13	200-0009	Crankshaft Cap	1	1	1
14	200-0014	Nut 10 x 14	1	1	1
15	200-0012	Spring Washer 10 x 17	1	1	1
16	200-0011	Standard Robot 6/4, 5/6 Ring	1	1	1
17	200-0002	1" Ring 40 x 3	1	1	1
18	200-0002	1/2" Ring 40 x 1.5	1	1	1



ITEM NO.	PART NO.	DESCRIPTION	QUANTITY		
			BT	BO	BT
1	220-0000	Nut 6	1	1	1
2	220-0003	Crutch	1	1	1
3	220-0004	Clutch Pressure Plate	1	1	1
4	220-0005	Spring-Top	8	8	8
5	220-0006	Spring	4	4	4
6	220-0007	Clutch Chkr. Cap. to 2204000	1	1	1
7	220-0274	Clutch Chkr. From 2204000	1	1	1
8	220-0008	Driver Gear	2	2	2
9	220-0009	Driver Gear	4	4	4
10	220-0010	Adjusting Screw	1	1	1
11	220-0010	Nut	1	1	1
12	220-0011	Washer 22 x 11.2 x 3.20	1	1	1
13	220-0000	Clutch Hub Cap. to 2204000	1	1	1
14	220-0000	Clutch Hub From 2204000	1	1	1
15	220-0018	Washer 11.2 x 24 x 6.6	2	2	2
16	220-0001	Driver Gear Cpl. Cap. to 2204000	1	1	1
17	220-0008	Driver Gear Cpl. From 2204000	1	1	1
18	220-0002	Oil Seal	1	1	1
19	220-0003	Primary Shaft Cap. to 2204000	1	1	1
20	220-0000	Primary Shaft From 2204000	1	1	1
21	220-0004	Ball 7/16	1	1	1
22	220-0000	Clutch Pin	1	1	1
23	220-0000	Ball 10 x 2	1	1	1
24	220-0007	Clutch Lever Spring	1	1	1
25	220-0019	Screw 4 for Clutch Lever	1	1	1
26	220-0000	Clutch 4 x 8	1	1	1
27	220-0000	Clutch Lever Cpl.	1	1	1
28	220-0020	Washer 20.8 x 28 x 6.2	1	1	1
29	220-0000	1st Gear	1	1	1
30	220-0000	2nd Gear	1	1	1
31	220-0000	4th Gear	1	1	1
32	220-0000	Engagement Rod	1	1	1
33	220-0000	Spring	10	10	10
34	220-0000	Spring	2	2	2
35	220-0007	Push Rod	2	2	2
36	220-0000	Plug	2	2	2
37	220-0000	Secondary Shaft	2	2	2
38	220-0000	Coude Ring	1	1	1
39	220-0007	Screw	2	2	2
40	220-0007	Pin	1	1	1
41	220-0000	Spacer 10 Teeth Gear	1	1	1
42	220-0000	Spacer 10 Teeth Gear	1	1	1
43	220-0018	Spacer 10 Teeth	1	1	1
44	220-0021	Washer 14	1	1	1
45	220-0022	Nut	1	1	1





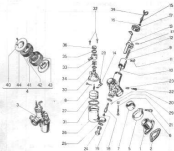
ITEM NO.	PART NO.	DESCRIPTION	QUANTITY		
			BT	BC	JC
1	228-0004	Rubber Cover .....	1	1	1
2	228-0003	Spring 6 x 25 .....	2	2	2
3	228-0005	Hex Starter Pedal .....	1	1	1
4	228-0006	Spring Puller .....	1	1	1
5	228-0007	Rolling .....	1	1	1
6	228-0008	Retaining Spring .....	1	1	1
7	228-0009	Washer 19.2 x 32 x 2 .....	2	2	2
8	228-0009	Detent Shaft .....	1	1	1
9	228-0008	Spacers .....	1	1	1
10	228-0007	Detent .....	1	1	1
11	228-0008	Retaining Spring .....	1	1	1
12	228-0005	Washer 6.2 x 9.5 x 0.5 .....	2	2	2
13	228-0008	Washer 6.4 .....	2	2	2
14	228-0008	Spring Washer 6.8 x 9.1 .....	2	2	2

## STARTING &amp; GEAR BOX SELECTOR

1974

ITEM NO.	PART NO.	DESCRIPTION	QUANTITY		
			BT	BC	JC
15	220-8027	Screw 6 x 18	2	2	2
16	220-0083	Circle 4	2	2	2
17	220-0094	Gear Control Fork	1	1	1
18	220-0086	Gear Lever Cpl	1	1	1
19	220-0085	Rubber Cover	1	1	1
20	220-0087	Shaft For Selector Lever	1	1	1
21	220-0011	Gasket	1	1	1
22	220-8028	Spring Washer 8.4 x 15	2	2	2
23	220-0088	Cap	1	1	1
24	220-0089	Pedal	1	1	1
25	220-8029	Washer 26.2 x 30 x 0.5	2	2	2
26	220-0090	Drum	1	1	1
27	220-0091	Retaining Spring	1	1	1
28	220-0092	Anchor	1	1	1
29	220-0093	Bracket	1	1	1
30	220-8030	Washer 26.2 x 34 x 1	1	1	1
31	220-0094	Anchor Bracket Cpl	1	1	1
32	220-0095	Retaining Spring	1	1	1



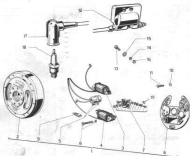


ITEM NO.	PART NO.	DESCRIPTION	Dollars	QUANTITY		
				BT	BC	JC
1	208 0000	Flange Bolt Includ				
2	208 0001	Bracket				
3		Carburetor Cap	2.00	1		
4		Air Filter	2.20	1		
5	208 2003	Clamp				
6	208 4021	Score				
7	208 2004	Reducer Spring				
8	208 2005	Needle Valve				
9	208 2006	Throttle Valve	1.50			
10	208 2007	Needle	1.50			
11	208 2008	Spring Wire				
12	208 2009	Spring				
13	208 2010	Cover				
14	208 2011	Flare Needle Arm				
15	208 2012	Adjusting Cable Screw				
16	208 2013	Lock Nut				
17	208 2014	Insured Ring				
18	208 2015	Needle Jet	2.00			

# CARBURATOR

1974

ITEM NO.	PART NO.	DESCRIPTION	Dellants #	QUANTITY		
				BT	BC	JR
18	220 2016	Main Jet (Std) no. 90	14-86	1	1	1
19	220 2026	Main Jet (Optional) no. 77	14-87	1	1	1
19	220 2007	Main Jet (Optional) no. 80	14-80	1	1	1
19	220 2008	Main Jet (Optional) no. 83	14-83	1	1	1
19	220 2015	Main Jet (Optional) no. 85	14-85	1	1	1
19	220 2009	Main Jet (Optional) no. 87	14-87	1	1	1
19	220 2040	Main Jet (Optional) no. 92	14-92	1	1	1
19	220 2041	Main Jet (Optional) no. 95	14-95	1	1	1
20	220 2017	Slow Running Jet	14-86	1	1	1
21	220 6030	Screw	14-15	1	1	1
22	220 6034	Air Adjusting Screw	14-15	1	1	1
23	220 2018	Spring	14-11	1	1	1
24	220 2019	Plug	14-11	1	1	1
25	220 2020	Gasket	14-11	1	1	1
26	220 2021	Floot Chamber	14-11	1	1	1
27	220 2022	Floot Gpl	14-11	1	1	1
28	220 2023	Floot Needle	14-11	1	1	1
29	220 6026	Nut	14-11	1	1	1
30	<del>220 2024</del>	Cover <b>220 2024</b>	14-11	1	1	1
31	220 2025	Gasket	14-11	1	1	1
32	220 6036	Screw	14-11	2	2	2
33	<del>220 2026</del>	Stap (Retrol Plug) <b>220 2026</b>	14-11	1	1	1
34	220 2027	Filter	14-11	1	1	1
35	220 2028	Gasket	14-11	2	2	2
36	<del>220 2029</del>	Standard Plug <b>220 2029</b>	14-11	1	1	1
37	220 2030	Plug For Air Stop	14-11	1	1	1
38	220 2031	Throttle Control Cable & Housing	14-11	1	1	1
39	220 8236	Throttle Control Cable & Housing	14-11	1	1	1
40	220 6037	Screw	14-11	2	2	2
41	220 2032	Filter Element	14-11	1	1	1
42	220 2033	Inner Filter Plate	14-11	1	1	1
43	220 2034	Outer Filter Plate	14-11	1	1	1
44	220 2035	Filter Cover	14-11	1	1	1
	220 8295	Throttle Inner Cable	14-11	1	1	1



*CEV Parts Blastmaster*

ITEM NO.	PART NO.	DESCRIPTION	QUANTITY	
			BT	GC
1	220-0001	Magnets .....	1	1
2	220-0002	Magnets W/ig. <b>120 W/IG</b> .....	1	1
3	220-0003	Generator Coil .....	1	1
4	220-0004	Lighting Coil .....	1	1
5	220-0005	Condenser W/Strap .....	1	1
6	220-0006	Arrestor Plate .....	1	1
7	220-0007	Carman Brake Pin .....	1	1
8	220-0008	Screen 4 x 20 W/Water .....	1	1
9	220-0009	Felt .....	1	1
10	220-0010	Washer .....	2	2
11	220-0011	Screen 4 x 10 .....	2	2
12	220-0009	Ignition Coil .....	1	1
13	220-0011	Screen 8 x 20 .....	2	2
14	220-0000	Spring Washer .....	2	2
15	220-0008	Washer .....	2	2
16	220-0008	Nut .....	2	2
17	220-0010	Spark Plug Connector .....	1	1
18	220-0010	Spark Plug .....	1	1
19	220-0010	Brakes Register Screw .....	1	1

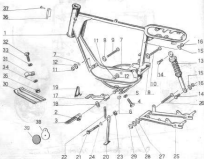




Don't! Electronic Parts & Components

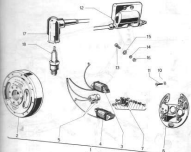
ITEM NO.	PART NO.	DESCRIPTION	QUANTITY		
			BT	SC	SI
1	200 0100	Magnet	1	1	0
2	200 0101	Magnet Ring	1	1	0
3	200 0102	Generator Coil	1	1	1
4	200 0103	Lighting Coil	1	1	1
5	200 0104	Condenser W/Spark	1	1	1
6	200 0105	Armature Plate	1	1	1
7	200 0106	Control Brake Assembly	1	1	1
10	200 0201	Washer	2	2	2
11	200 0202	Drive	1	1	1
12	200 0203	Ignition Coil	1	1	2
13	200 0204	Beats	1	1	2
14	200 0205	Washer	2	2	2
15	200 0206	Washer	2	2	2
16	200 0207	Run	2	2	2
17	200 0208	Spark Plug (Standard)	1	1	1
18	200 0211	Spark Plug	1	1	1





PART NO.	PART NO.	DESCRIPTION	QUANTITY	
			RT	LC
1	200 8013	Frame (Kit to 200 4187)	1	
1	200 8016	Frame (Part to 200 4187)	1	1
1	200 8157	Frame (Part to 200 4187)	1	1
1	200 8084	Frame (Part to 200 4187)	1	1
2	200 8074	Left Foot Rest	1	1
3	200 8075	Right Footrest	1	1
4	200 8040	Screw 8 x 25	1	2
5	200 8076	Washer	1	2
6	200 8043	Nut	1	2
7	200 8084	Washer	1	4
8	200 8080	Washer	1	4
9	200 8080	Front Spring Pin Spring	1	1
10	200 8081	Rear Spring Pin Spring	1	2
11	200 8086	Nut	2	2

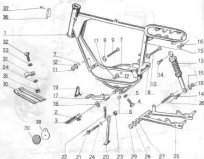




Don't! Electronic Parts & Components

ITEM NO.	PART NO.	DESCRIPTION	QUANTITY		
			BT	SC	SI
1	200 0100	Magnet	1	1	0
2	200 0103	Magnet Ring	1	1	0
3	200 0107	Generator Coil	1	1	1
4	200 0108	Lighting Coil	1	1	1
5	200 0104	Condenser W/Belt	1	1	1
6	200 0105	Armature Plate	1	1	1
7	200 0106	Control Brake Assembly	1	1	1
10	200 0030	Washer	2	2	2
11	200 0040	Drive	1	1	1
12	200 0101	Ignition Coil	1	1	2
13	200 0041	Beats	1	1	2
14	200 0074	Washer	2	2	2
15	200 0035	Washer	2	2	2
16	200 0036	Washer	2	2	2
17	200 0030	Spark Plug (Standard)	1	1	1
18	200 0011	Spark Plug	1	1	1





PART NO.	PART NO.	DESCRIPTION	QUANTITY	
			RT	LC
1	200 8013	Frame (Up to 800-4187)	1	
1	200 8016	Frame (From 8014-880)	1	
1	200 8157	Frame (Up to 8014-880)		1
1	200 8084	Frame (From 8014-880)		1
2	200 8014	Left Foot Rest	1	1
3	200 8015	Right Footrest	1	1
4	200 8040	Screw 8 x 25	2	2
5	200 8039	Washer	2	2
6	200 8043	Nut	2	2
7	200 8084	Washer	2	2
8	200 8080	Washer	4	4
9	200 8090	Front Spring Pin Spring	1	1
10	200 8091	Rear Spring Pin Spring	2	2
11	200 8046	Nut	2	2



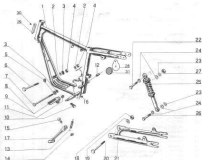
~~XXXXXXXXXX~~ CROSS

FRAME

1974

ITEM NO.	PART NO.	DESCRIPTION	QUANTITY	
			BT	BC
12	220-6028	Spring Washer 8/4 x 16	3	3
13	220-6021	Rear Suspension	2	2
14	220-6049	Screw 10-645 A	4	4
15	220-6050	Washer	4	4
16	220-6061	Nut	4	4
17	<del>220-6016</del>	Rear Brake Pedal Cpl. 220-6016	1	1
18	220-6017	Circlip	1	1
19	220-6002	Retaining Spring	1	1
20	220-6018	Stand	1	1
21	220-6062	Screw 10 x 26	1	1
22	220-6000	Spring	1	1
23	220-6061	Nut	1	1
24	220-6019	Bushing	1	1
25	220-6004	Rear Pivot Fork (Up to ED14192)	1	
26	220-6298	Rear Pivot Fork (From ED14198)	1	
26	220-6024	Rear Pivot Fork (Up to ED14192)		1
26	220-6300	Rear Pivot Fork (From ED14198)		1
26	220-6006	Pivot Screw (Up to ED14192)	1	1
26	220-6154	Pivot Screw (From ED14198)	1	1
27	220-6020	Bushing (Up to ED14192)	1	1
27	220-6298	Bushing (From ED14198)	2	2
28	220-6100	Washer	1	1
29	220-6099	Nut	1	1
30	220-6021	Plate	1	1
31	220-6022	"U" Bracket	4	4
32	220-6096	Screws	4	4
33	220-6056	Washer	8	8
34	220-6008	Washer	4	4
35	220-6008	Nut	4	4
36	220-6267	Out Line Plate (Up to ED14192)	1	1
36	220-6176	Out Line Plate (From ED14198)	1	1
37	220-6101	Rivet	2	2
38	220-6176	Side Reflector Bracket Plate	4	4
39	220-6177	Front Side Reflector	2	2
39	220-6178	Rear Side Reflector	2	2





ITEM NO.	PART NO.	DESCRIPTION	QUANTITY
			EA/SET
1	225-0140	Frame Cap	1
2	225-0138	Spring Washer	2
3	225-0134	Turner Washer	2
4	225-0146	Nut B	8
5	225-0145	Washer	4
6	225-0040	Scrub (Front) Pin Spring	1
7	225-0047	Scrub (Rear) Pin Spring	2
8	225-0031	Right Front Bar	1
9	225-0034	Left Front Bar	1
10	225-0042	Scrub Pin, Rear Wheel	2
11	225-0043	Nut	2
12	225-0038	Spacer	1
13	225-0032	Spring	1
14	225-0031	Nut	1

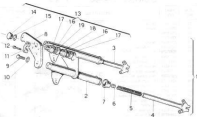


Union Cross FRAME 17" wheel

1974

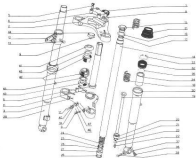
ITEM NO.	PART NO.	DESCRIPTION	QUANTITY
			JUNIOR
10	220-6052	Screw	1
16	220-6079	Bushing	1
17	220-6167	Stand	1
18	220-6099	Nut	1
19	220-6100	Washer	1
20	220-6154	Flange Screw	1
21	<del>220-6169</del>	Rear Fork <del>220-6169</del>	1
22	220-6048	Fix Left Top Side Screw 10 x 40	1
23	220-6170	Fix Right Top Side Screw 10 x 35	1
23	220-6171	Washer 10.0 x 18	1
24	220-6172	Washer 10.0 x 25	8
25	<del>220-6173</del>	Rear Shock Absorber <del>220-6173</del>	2
26	220-6176	Fix Left Bottom Side Screw 10 x 35	1
26	220-6048	Fix Right Bottom Side Screw 10 x 40	1
27	220-6051	Nut	1
28	220-6176	Side Reflector Bracket Plate	4
29	220-6176	Out Line Plate	1
30	220-6101	Rivet	2
31	220-6177	Front Side Reflector	2
31	220-6178	Rear Side Reflector	2

220-6175



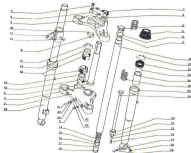
ITEM NO.	PART NO.	DESCRIPTION	QUANTITY	
			BT	BC
1	200-8811	Frame Fork Cap	1	
1	200-8826	Frame Fork Cap		1
2	200-8812	Fork Bar	1	
2	200-8827	Fork Bar		1
24	200-8813	Fork Leg	2	
3	200-8820	Left Fork Leg		1
4	200-8819	Right Fork Leg		1
5	200-8823	Spring	2	2
6	200-8824	Cap	2	2
7	200-8829	Fork Bush Cover	2	2
8	200-8830	Fork Tube Upper	1	
8	200-8828	Fork Tube Upper		1
9	200-8827	Spacers	2	2
10	200-8840	Washer	2	2
11	200-8826	Clamp	2	2
12	200-8828	Spacers	4	4
13	200-8827	Spacers	1	1
14	200-8829	Spacers	1	1
15	200-8820	Washer	1	1
16	200-8828	Ball Cap	2	2
17	200-8829	Cap (Black, Front)	2	2
18	200-8830	Cap (Black, Front)	1	1
19	200-8827	Cap (Black, Drive)	1	1
	200-8820	Anti-lock Cap	2	2





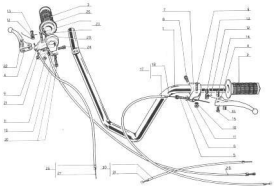
ITEM NO.	PART NO.	DESCRIPTION	QUANTITY
1		Shock Cap	1
2	220 4021	Toe Pin	1
3	220 4022	Bottom Pin	1
4	220 4023	Clamping Plate	1
5	220 4024	Bracket	4
6	220 4024	Tube	1
7	220 4102	Nut	1
8	220 4103	Washer	1
9	220 4104	Bracket	4
10	220 4105	Bracket Pin Nut	1
11	220 4106	Bracket	1





ITEM NO.	PART NO.	DESCRIPTION	QUANTITY	
			MIN	MAX
1	200 4036	Fork Cap - Open Center (Rim Bottom)	1	1
2	200 4037	Top Plate	1	1
3	200 4032	Bottom Plate	1	1
4	200 4033	Clamping Plate	1	1
5	200 9008	Spring	1	1
6	200 4034	Tube	1	1
7	200 9 102	Nut	1	1
8	200 9 103	Washer	1	1
9	200 9 104	Spring	1	1
10	200 9 105	Spring Fix Bolt	1	1
11	200 9 100	Spring	1	1



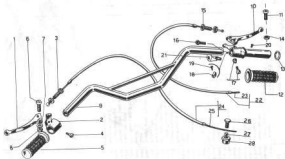


Junior Cross HANDLE BAR

1974

Similar Ducati 100/125 ~~cross~~

ITEM NO.	PART NO.	DESCRIPTION	QUANTITY	
			BT	BC
		Throttle Twist Grip ..... 2.30, 50/33	1	1
		Clutch Twist Grip ..... 2.30, 50/33	1	1
1	220 8039	Handle Bar Base .....	1	1
2	220 8042	Left Hand Grip .....	1	1
3	220 8041	Right Hand Grip .....	1	1
4	220 8040	Clutch-Brake Lever .....	2	2
5	220 8098	Adjusting Screw .....	1	1
6	220 8099	Locknut .....	1	1
7	220 8038	Clutch Lever Body .....	1	1
8	220 8120	Screw .....	1	1
9	220 8062	Screw .....	2	2
10	220 8079	Washer .....	1	1
11	220 8121	Nut .....	2	2
12	220 8043	Spring .....	2	2
13	220 8036	Spacer .....	2	2
14	220 8049	Junction Block .....	1	1
15	220 8067	Screw .....	1	1
16	220 8051	Drop .....	1	1
17	220 8046	Clutch Cable & Housing .....	1	1
18	220 8272	Clutch Inner Cable .....	1	1
19	220 8044	Pressing Drum Spring .....	1	1
20	220 8086	Adjusting Screw W/Spring .....	1	1
21	220 8273	Front Stop Switch Bracket Plate .....	1	1
22	220 8034	Washer .....	1	1
23	220 8060	Junction Block (Throttle) .....	1	1
24	220 8085	Screw .....	1	1
25	220 8070	Washer .....	1	1
26	220 8045	Front Brake Cable & Housing .....	1	1
27	220 8274	Brake Inner Cable .....	1	1
28	220 8047	Throttle Control Cable & Housing .....	1	1
29	220 8266	Throttle Inner Cable .....	1	1
30	220 8048	Rear Brake Cable & Housing .....	1	1
31	220 8275	Brake Inner Cable .....	1	1



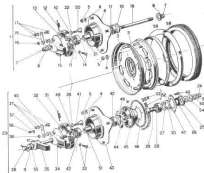


## HANDLE BAR

15

ITEM NO.	PART NO.	DESCRIPTION	QUANTITY
			JUNIOR
	220 8178	Throttle Twist Grip Cpl	1
	220 8180	Clutch Twist Grip Cpl	1
1	220 8182	Clutch Lever	1
2	220 8183	Clutch Lever Body	1
3	220 8184	Adjusting Screw Cpl	1
4	220 8120	Screw	1
5	220 8185	Left Hand Grip (Clutch)	1
6	220 8062	Screw	1
7	220 8079	Washer	1
8	220 8121	Nut	1
9	220 8186	Handle Bar	1
10	220 8187	Brake Lever	1
11	220 8062	Screw	1
12	220 8188	Right Hand Grip (Throttle)	1
13	220 8070	Washer	1
14	220 8121	Nut	1
15	220 8189	Adjusting Screw Cpl (Brake Cab)	1
16	220 8190	Adjusting Screw Cpl. (Throttle Cab)	1
17	220 8133	Fixation Screw	1
18	220 8191	Slider	1
19	220 8134	Screw	1
20	220 8125	Screw	1
21	220 8192	Swap Switch Bracket Plate	1
22	220 8193	Front Brake Cable & Housing	1
23	220 8194	Inner Cable	1
24	220 8195	Clutch Cable & Housing	1
25	220 8197	Inner Cable	1
26	220 8198	Junction Block	1
27	220 8051	Drop	1
28	220 8067	Screw	1

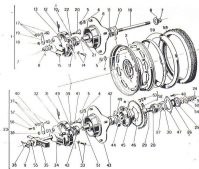
USE ON DUCAT CADET



ITEM NO.	PART NO.	DESCRIPTION	QUANTITY	
			BT	BC
	220-4001	Front Wheel Cal .....	1	1
1	220-4008	Front Wheel Hub .....	1	1
2	220-4000	Right Half Wheel .....	2	2
3	220-4010	Left Half Wheel .....	2	2
4	220-4009	Spring Washer .....	88	80
5	220-4068	Nut .....	28	20
6	220-4074	Hub Body .....	1	1
5,6	220-4082	Nut and Washer .....	2	2
7	220-5712	Washer .....	2	2
8	220-4881	Washer .....	1	1
9	220-4876	Bearing .....	2	2
11	220-4873	Spring .....	2	2
12	220-4878	Brake Shoe Bolt .....	2	2
13	220-4884	Adjustment Screw .....	1	1
14	220-4879	Brake Flange .....	1	1
15	220-4880	Spline .....	1	1



## WHEEL

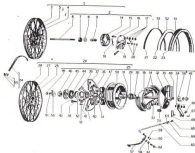


ITEM NO.	PART NO.	DESCRIPTION	QUANTITY	
			BT	BC
1	200-4007	Front Wheel Cap	1	1
2	200-4008	Front Wheel Hub	1	1
3	200-4009	Right Half Wheel	1	1
4	200-4010	Left Half Wheel	1	1
5	200-4000	Locking Washer	10	10
6	200-4006	Nut	10	10
7	200-4014	Hub Body	1	1
8	200-4003	Nut and Washer	2	2
9	200-4112	Washer	2	2
10	200-6000	Washer	1	1
11	200-6076	Bearing	1	1
12	200-6077	Spring	2	2
13	200-6078	Brake Shoe Cap	2	2
14	200-6084	Adjustment Screw	1	1
15	200-6079	Brake Flange	1	1
16	200-6080	Spindle	1	1



ITEM NO.	PART NO.	DESCRIPTION	QUANTITY	
			BT	BU
11	220 8001	Ballnut Pin Cap		
12	220 8002	Pin	1	1
13	220 8003	Wash Lock	1	1
14	220 8004	Wash Lock	1	1
15	220 8005	Wash Lock	1	1
16	220 8006	Wash Lock	1	1
17	220 8007	Wash Lock	1	1
18	220 8008	Wash Lock	1	1
19	220 8009	Wash Lock	1	1
20	220 8010	Wash Lock	1	1
21	220 8011	Wash Lock	1	1
22	220 8012	Wash Lock	1	1
23	220 8013	Wash Lock	1	1
24	220 8014	Wash Lock	1	1
25	220 8015	Wash Lock	1	1
26	220 8016	Wash Lock	1	1
27	220 8017	Wash Lock	1	1
28	220 8018	Wash Lock	1	1
29	220 8019	Wash Lock	1	1
30	220 8020	Wash Lock	1	1
31	220 8021	Wash Lock	1	1
32	220 8022	Wash Lock	1	1
33	220 8023	Wash Lock	1	1
34	220 8024	Wash Lock	1	1
35	220 8025	Wash Lock	1	1
36	220 8026	Wash Lock	1	1
37	220 8027	Wash Lock	1	1
38	220 8028	Wash Lock	1	1
39	220 8029	Wash Lock	1	1
40	220 8030	Wash Lock	1	1
41	220 8031	Wash Lock	1	1
42	220 8032	Wash Lock	1	1
43	220 8033	Wash Lock	1	1
44	220 8034	Wash Lock	1	1
45	220 8035	Wash Lock	1	1
46	220 8036	Wash Lock	1	1
47	220 8037	Wash Lock	1	1
48	220 8038	Wash Lock	1	1
49	220 8039	Wash Lock	1	1
50	220 8040	Wash Lock	1	1
51	220 8041	Wash Lock	1	1
52	220 8042	Wash Lock	1	1
53	220 8043	Wash Lock	1	1
54	220 8044	Wash Lock	1	1
55	220 8045	Wash Lock	1	1
56	220 8046	Wash Lock	1	1
57	220 8047	Wash Lock	1	1
58	220 8048	Wash Lock	1	1
59	220 8049	Wash Lock	1	1
60	220 8050	Wash Lock	1	1
61	220 8051	Wash Lock	1	1
62	220 8052	Wash Lock	1	1
63	220 8053	Wash Lock	1	1
64	220 8054	Wash Lock	1	1
65	220 8055	Wash Lock	1	1
66	220 8056	Wash Lock	1	1
67	220 8057	Wash Lock	1	1
68	220 8058	Wash Lock	1	1
69	220 8059	Wash Lock	1	1
70	220 8060	Wash Lock	1	1
71	220 8061	Wash Lock	1	1
72	220 8062	Wash Lock	1	1
73	220 8063	Wash Lock	1	1
74	220 8064	Wash Lock	1	1
75	220 8065	Wash Lock	1	1
76	220 8066	Wash Lock	1	1
77	220 8067	Wash Lock	1	1
78	220 8068	Wash Lock	1	1
79	220 8069	Wash Lock	1	1
80	220 8070	Wash Lock	1	1
81	220 8071	Wash Lock	1	1
82	220 8072	Wash Lock	1	1
83	220 8073	Wash Lock	1	1
84	220 8074	Wash Lock	1	1
85	220 8075	Wash Lock	1	1
86	220 8076	Wash Lock	1	1
87	220 8077	Wash Lock	1	1
88	220 8078	Wash Lock	1	1
89	220 8079	Wash Lock	1	1
90	220 8080	Wash Lock	1	1
91	220 8081	Wash Lock	1	1
92	220 8082	Wash Lock	1	1
93	220 8083	Wash Lock	1	1
94	220 8084	Wash Lock	1	1
95	220 8085	Wash Lock	1	1
96	220 8086	Wash Lock	1	1
97	220 8087	Wash Lock	1	1
98	220 8088	Wash Lock	1	1
99	220 8089	Wash Lock	1	1
100	220 8090	Wash Lock	1	1





ITEM NO.	PART NO.	DESCRIPTION	QUANTITY
			JUNIOR
1	700-4000	Front Wheel	1
2	700-4007	Front Wheel Hub	1
3	700-4008	Rim	1
4	700-4009	Spoke	30
5	700-4000	Nipple	30
6	700-4001	Spacette	1
7	700-8030	Bearing	2
8	700-8003	Washer	2
9	700-8000	Spacer	1
10	700-8020	Washer	1
11	700-8020	Washer	1
12	700-8020	Spacer	4
13	700-8000	Nut	4
14	700-8000	Washer	2
15	700-4004	Brake Shoe Cam	1
16	700-4000	Brake Shoe	1
17	700-4000	Lever	1
18	700-4000	Washer	1
19	700-4000	Nut	1
20	700-4007	Spring	1

